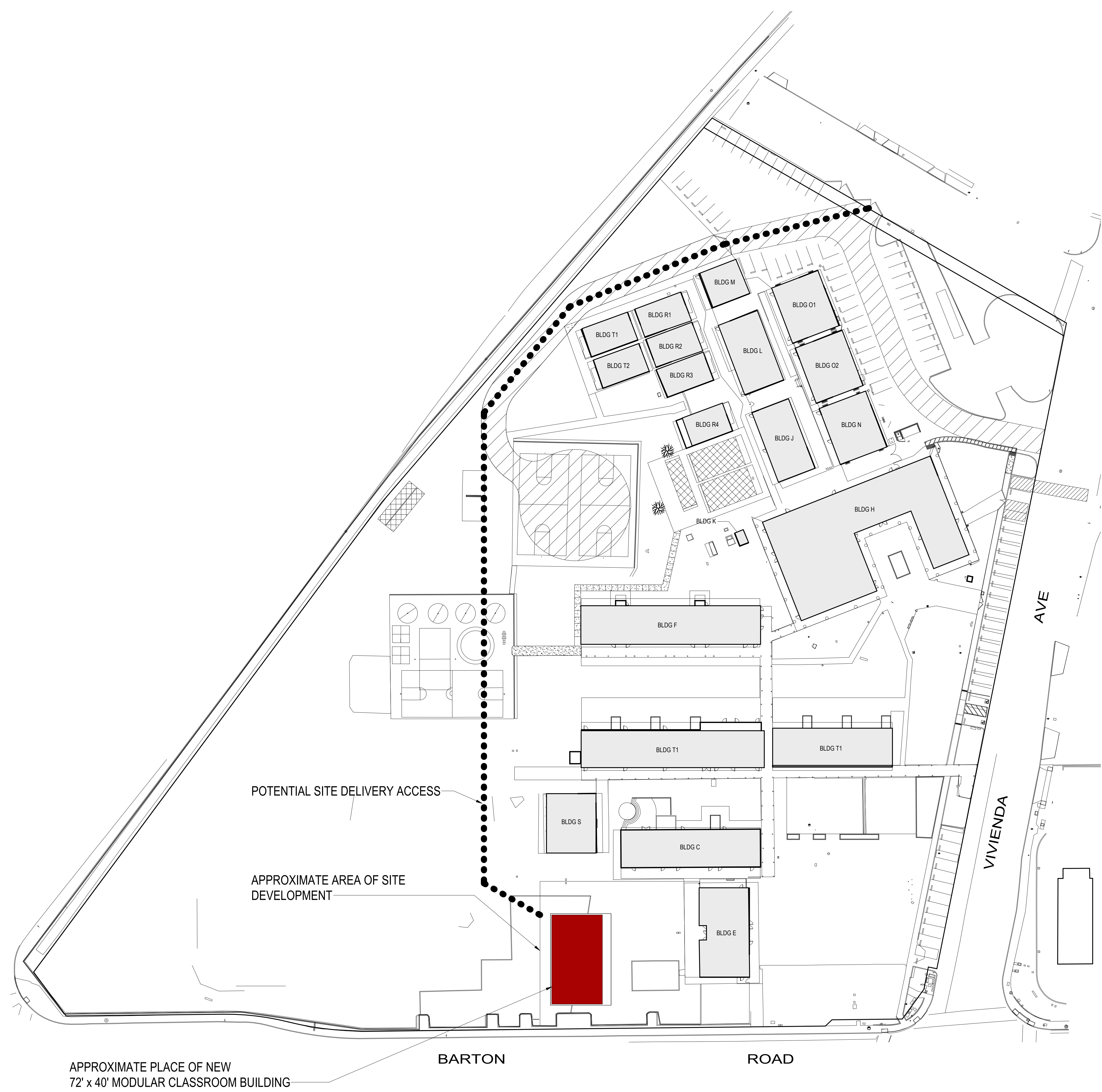
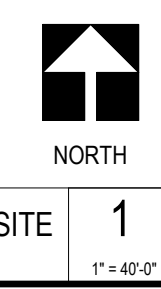


J:\22-12105-01_CUUSD_GJES_Chamroom Addition and Stewardship Design Process\03_Rev\22-12105-01.dwg
7/24/2023 5:58 PM



PROJECT ADDRESS:
 GRAND TERRACE ELEMENTARY SCHOOL
 12066 VIVIENDA AVE
 GRAND TERRACE, CA 92313



SITE 1
 1" = 40'

PROJECT NUMBER:	22-1217-00
PROJECT STATUS:	PI-Project Status
SHEET ISSUED:	07/18/22
DATE	DESCRIPTION



SEALS

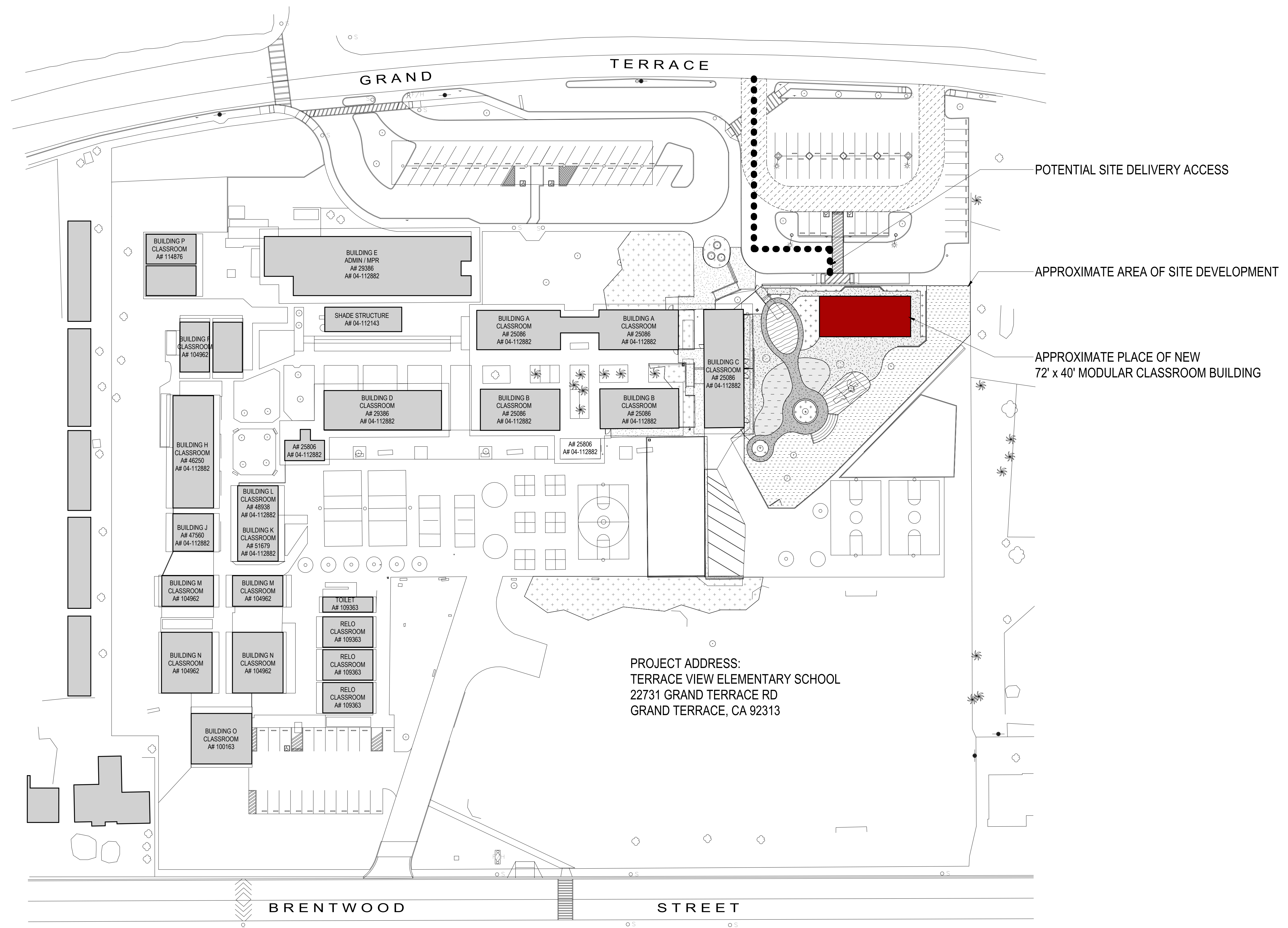
GRAND TERRACE SITE PLAN



COLTON JOINT UNIFIED SCHOOL DISTRICT
 GRAND TERRACE ELEMENTARY SCHOOL AND TERRACE VIEW ELEMENTARY
 SCHOOL TK MODULAR BUILDINGS
 22731 GRAND TERRACE ROAD
 GRAND TERRACE, CA 92313

CONSULTANT

T:\242023\5_05_13 PM...122-12107-00_C:\ESD Terrace View ES TK P\Architect\Design\US Design Process\03_Rev\02_2017_Plan Elevator Copy.rvt



PROJECT ADDRESS:
 TERRACE VIEW ELEMENTARY SCHOOL
 22731 GRAND TERRACE RD
 GRAND TERRACE, CA 92313

CONSULTANT:

TERRACE VIEW SITE PLAN

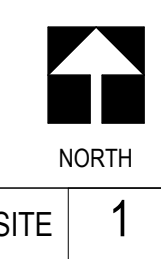
COLTON JOINT UNIFIED SCHOOL DISTRICT
 GRAND TERRACE ELEMENTARY SCHOOL AND TERRACE VIEW ELEMENTARY
 SCHOOL TK MODULAR BUILDINGS
 22731 GRAND TERRACE ROAD
 GRAND TERRACE, CA 92313



SEALS

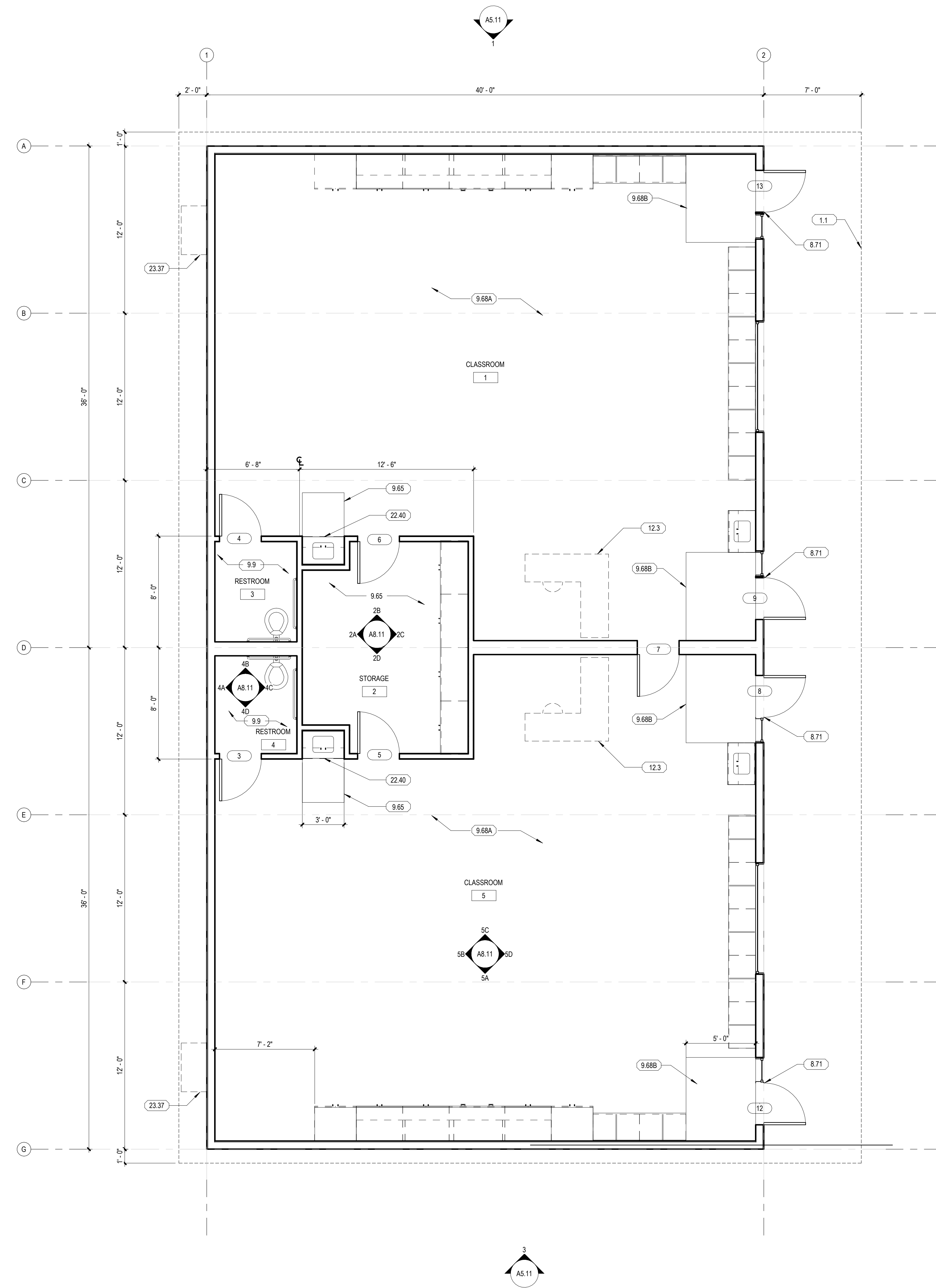


PROJECT NUMBER: 221217-00
 PROJECT STATUS: P1-Project Status
 SHEET ISSUED: 07/18/22
 DELTA: DATE DESCRIPTION



A1.12

T:\242023\5_05_23 PM 122-17105-01_CJUSD_GJES_Classroom_Auditor_and_Storage_Design_03_Rev12-1216-01.dwg



KEYNOTES

XX	DESCRIPTION
1.0	LINE OF MODULE
1.1	LINE OF ROOF OVERHANG
3.15	EXPANSION MOLDING
6.0	2" PLASTIC LAMINATE CAP
8.71	DOOR WITH PANIC HARDWARE
9.65	RESILIENT FLOORING
9.68A	CARPET TILE FLOORING
9.68B	WALK-OFF CARPET TILE
9.68B	EPOXY FLOORING
10.11	(4) SLIDING MARKERBOARD
12.3	TEACHER DESK
12.36A	2" PLASTIC LAMINATE COUNTERTOP
12.36B	2" PLASTIC LAMINATE COUNTERTOP, 24" DEEP WITH 3" SPLASH
22.40	ACCESSIBLE SINK BASE
23.37	WALL MOUNTED MECHANICAL WALL UNIT
26.56	EXTERIOR LIGHT FIXTURE

CONSULTANT:

FLOOR PLAN

COLTON JOINT UNIFIED SCHOOL DISTRICT
 GRAND TERRACE ELEMENTARY SCHOOL AND TERRACE VIEW ELEMENTARY
 SCHOOL TK MODULAR BUILDINGS
 22731 GRAND TERRACE ROAD
 GRAND TERRACE, CA 92313



SEALS

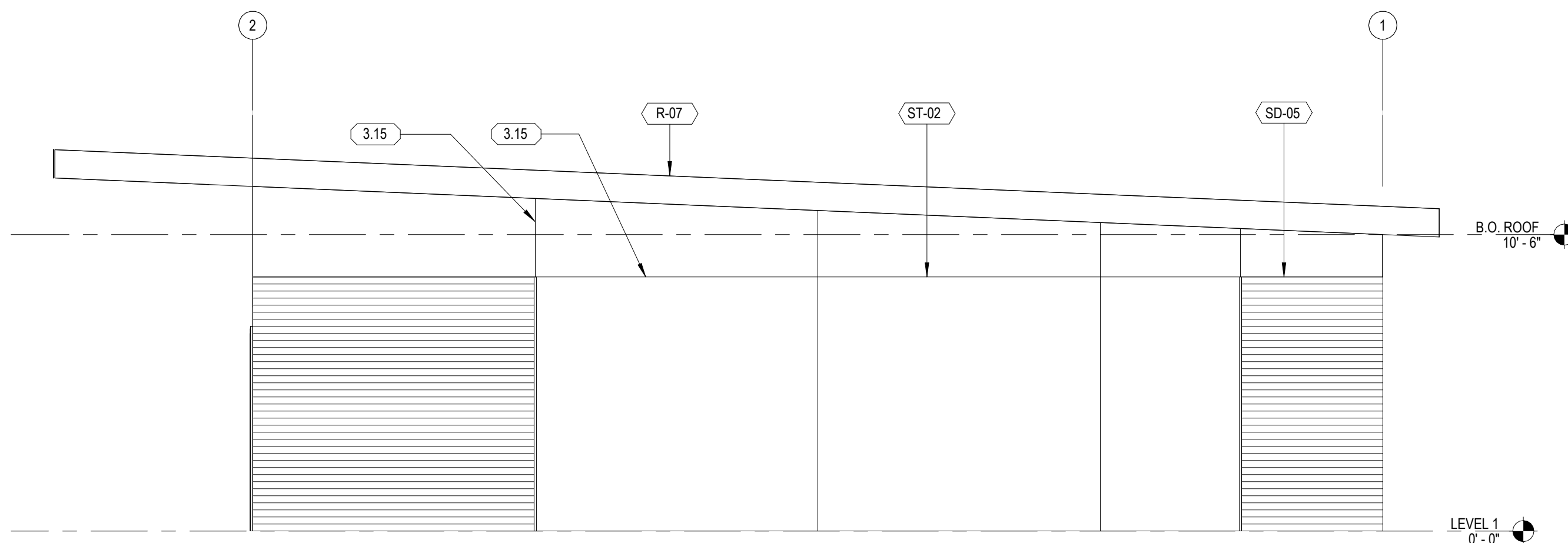


PROJECT NUMBER: 221207-00
 PROJECT STATUS: P1-Project Status
 SHEET ISSUED: 07/18/22
 DELTA: DATE DESCRIPTION

A2.21

LEVEL 1 1

T:\242023\5.05.38 PM 122-12105-01_CJUSD_GJES_Classroom Addition and Sitework\Design\03_Design Process\03_Rev\23-12105-01.dwg

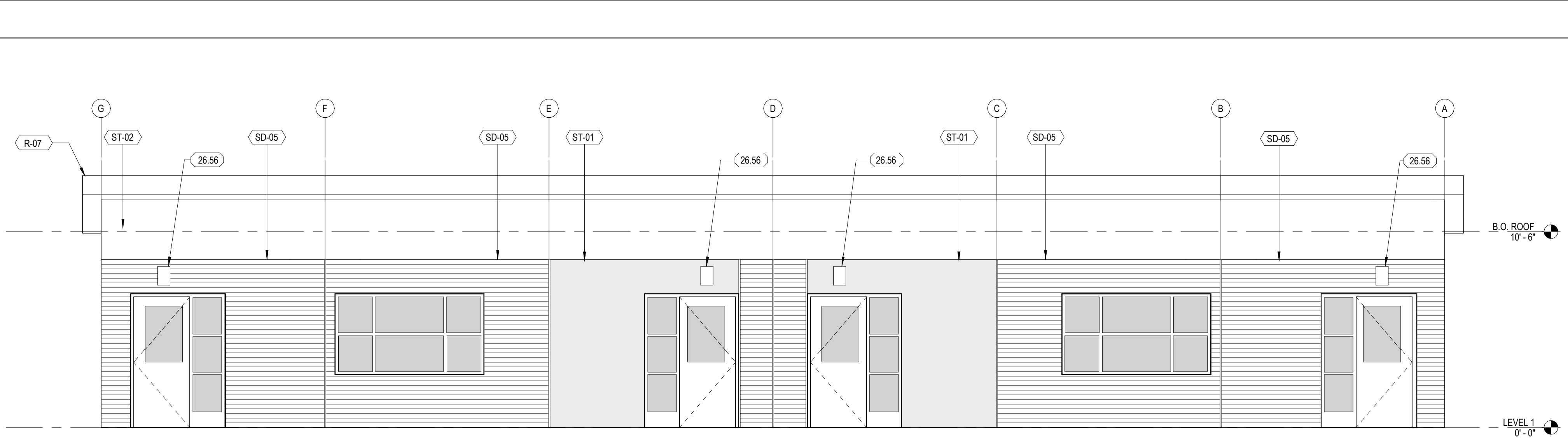


KEYNOTES

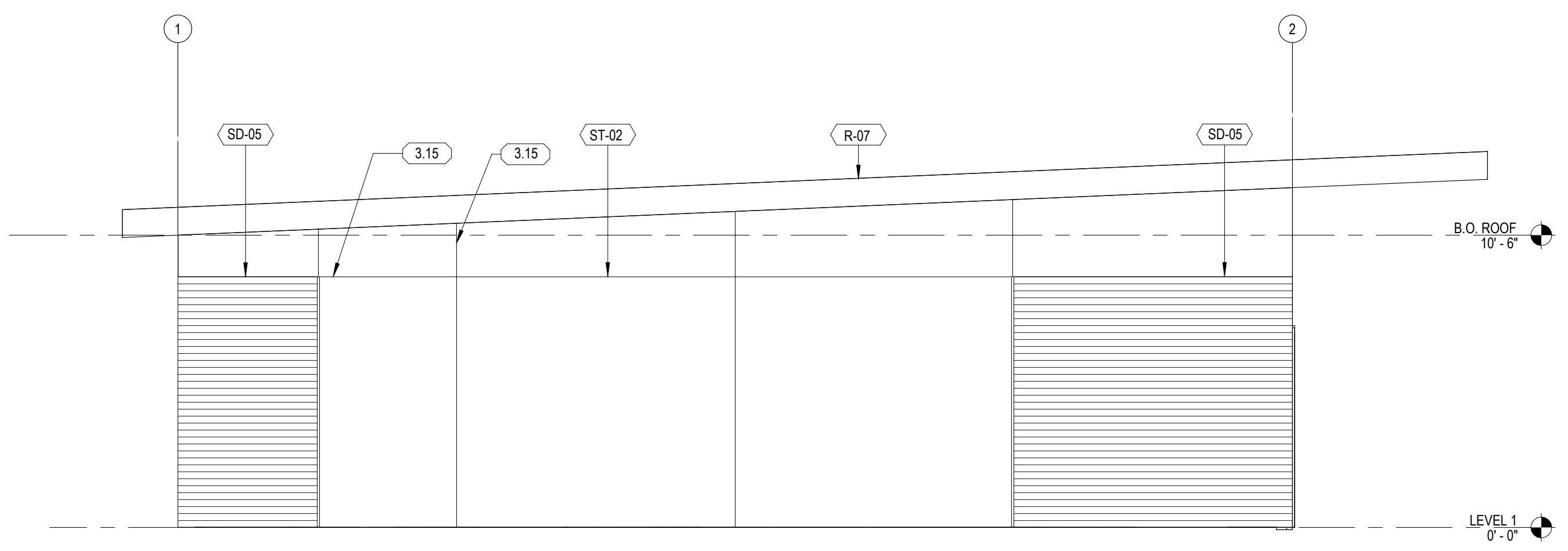
XX	DESCRIPTION
1.0	LINE OF MODULE
1.1	LINE OF ROOF OVERHANG
3.15	EXPANSION MOLDING
6.0	2" PLASTIC LAMINATE CAP
8.71	DOOR WITH PANIC HARDWARE
9.65	RESILIENT FLOORING
9.68A	CARPET TILE FLOORING
9.68B	WALK-OFF CARPET TILE
9.68C	EPOXY FLOORING
10.11	(4) SLIDING MARKERBOARD
12.3	TEACHER DESK
12.36A	2" PLASTIC LAMINATE COUNTERTOP
12.36B	2" PLASTIC LAMINATE COUNTERTOP, 24" DEEP WITH 3" SPLASH
22.40	ACCESSIBLE SINK BASE
23.37	WALL MOUNTED MECHANICAL WALL UNIT
26.56	EXTERIOR LIGHT FIXTURE

EXTERIOR MATERIAL LEGEND

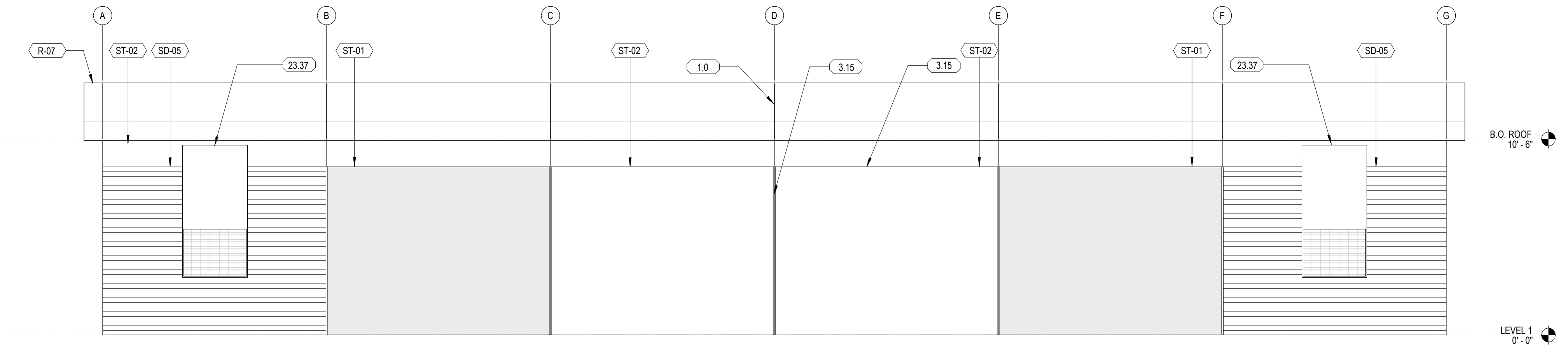
XX	MATERIAL TAG
ST-01	PAINTED HYBRID STUCCO
ST-02	FACADE APPLIED STUCCO
SD-05	PAINTED LAP SIDING
R-07	METAL ROOFING



NORTH 1
1/4" = 1'-0"



EAST 2
1/4" = 1'-0"



SOUTH 3
1/4" = 1'-0"

WEST 4
1/4" = 1'-0"

CONSULTANT

EXTERIOR ELEVATIONS

COLTON JOINT UNIFIED SCHOOL DISTRICT
 GRAND TERRACE ELEMENTARY SCHOOL AND TERRACE VIEW ELEMENTARY
 SCHOOL TK MODULAR BUILDINGS
 22731 GRAND TERRACE ROAD
 GRAND TERRACE, CA 92313



SEALS



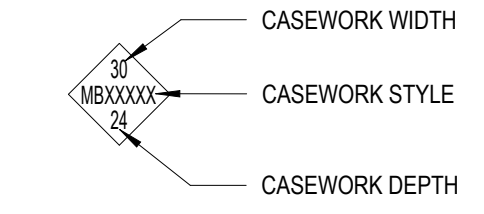
PROJECT NUMBER: 23-1217-00
 PROJECT STATUS: P1-Project Status
 SHEET ISSUED: 07/18/23
 DELTA: DATE DESCRIPTION

A5.11

KEYNOTES

XX	DESCRIPTION
1.0	LINE OF MODULE
1.1	LINE OF ROOF OVERHANG
3.15	EXPANSION MOLDING
6.0	2" PLASTIC LAMINATE CAP
8.71	DOOR WITH PANIC HARDWARE
9.65	RESILIENT FLOORING
9.68A	CARPET TILE FLOORING
9.68B	WALK-OFF CARPET TILE
9.68C	EPOXY FLOORING
10.11	(4) SLIDING MARKERBOARD
12.3	TEACHER DESK
12.36A	2" PLASTIC LAMINATE COUNTERTOP
12.36B	2" PLASTIC LAMINATE COUNTERTOP, 24" DEEP WITH 3" SPLASH
22.40	ACCESSIBLE SINK BASE
23.37	WALL MOUNTED MECHANICAL WALL UNIT
26.56	EXTERIOR LIGHT FIXTURE

CASEWORK ELEVATION TAG

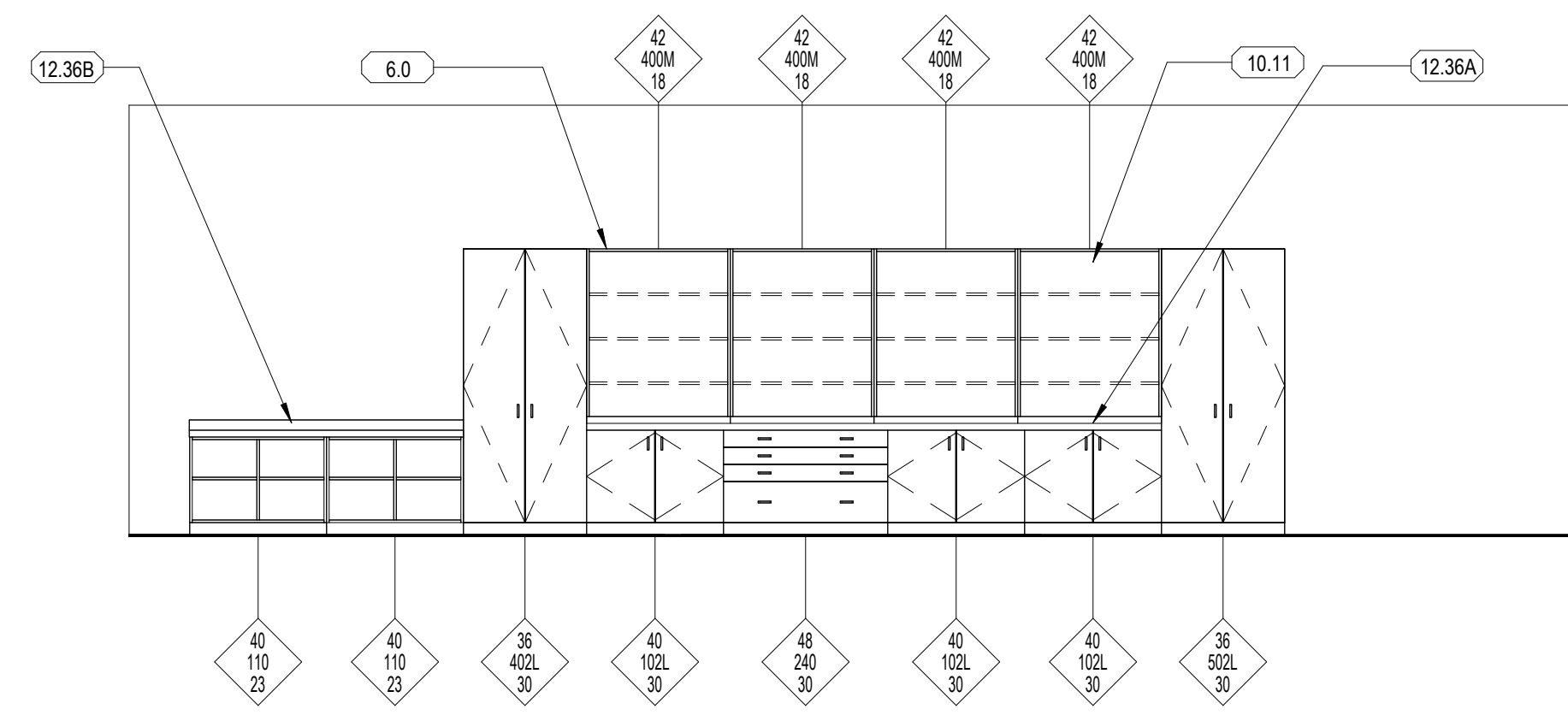


CASEWORK GENERAL NOTES:

CASEWORK TYPE / HEIGHTS:

BASE CABINETS:	TALL STORAGE:	
102" BASE CABINET	31" A.F.F. TALL CABINET	84" A.F.F.
110" CUBBIES	31" A.F.F. WARDROBE	84" A.F.F.
154B" SINK BASE	31" A.F.F.	
154C" SINK BASE	31" A.F.F.	
240" PAPER DRAWERS	31" A.F.F.	

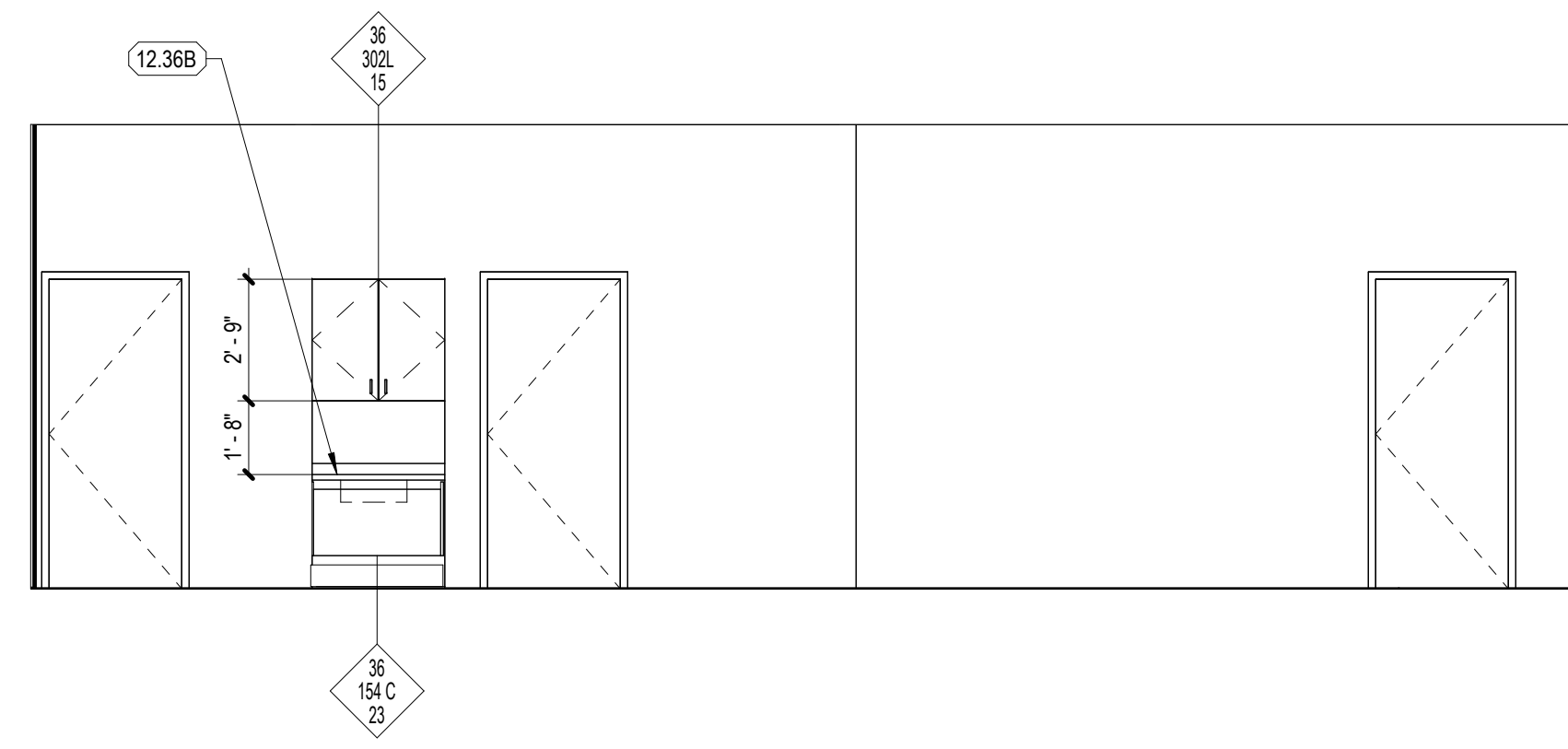
WALL CABINETS: (MOUNTED AT 84" TO TOP)	33" HIGH	53" HIGH
302" WALL CABINET	33" HIGH	
400" MEDIUM SHELVING UNIT	53" HIGH	



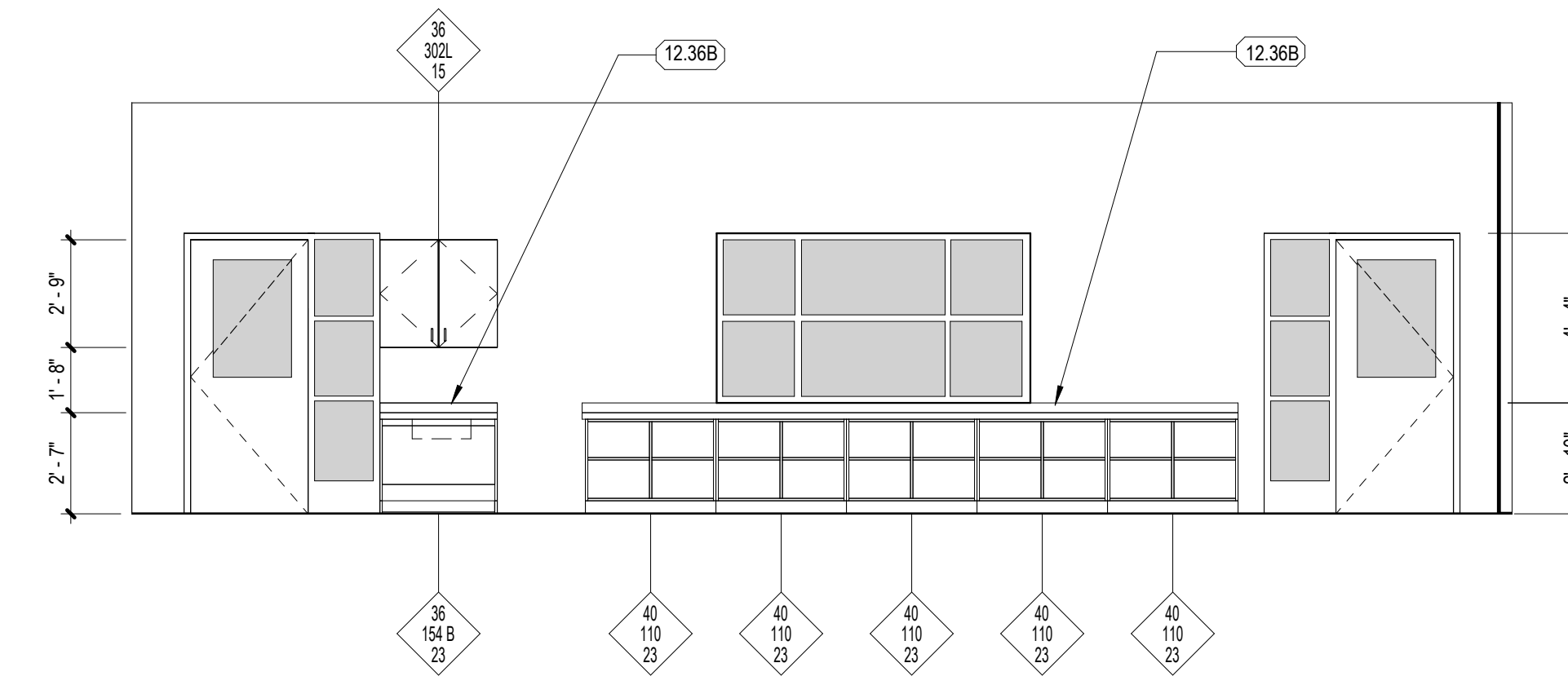
CLASSROOM 1 5A
1/4" = 1'-0"



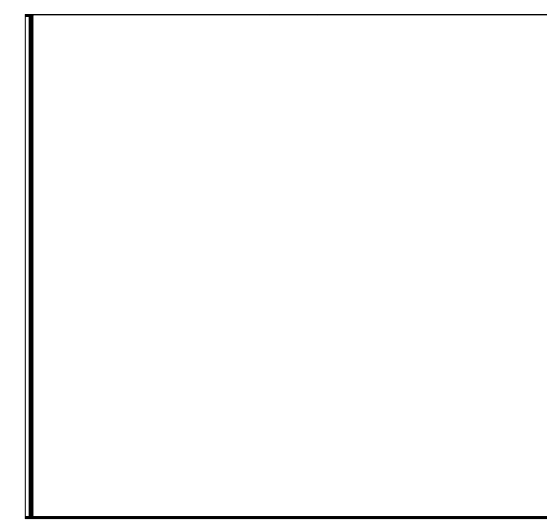
CLASSROOM 2 5B
1/4" = 1'-0"



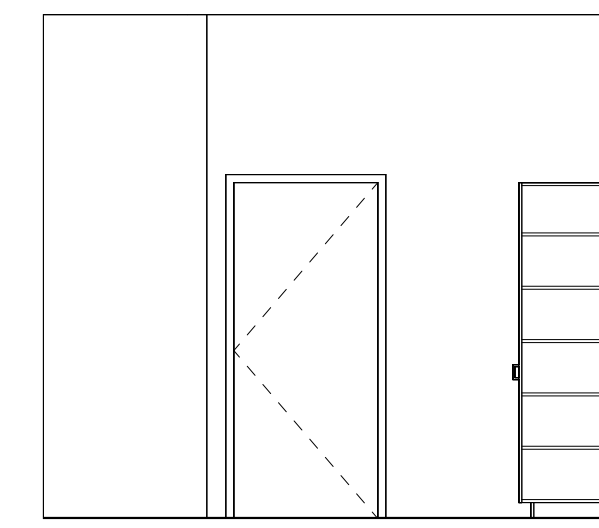
CLASSROOM 3 5C
1/4" = 1'-0"



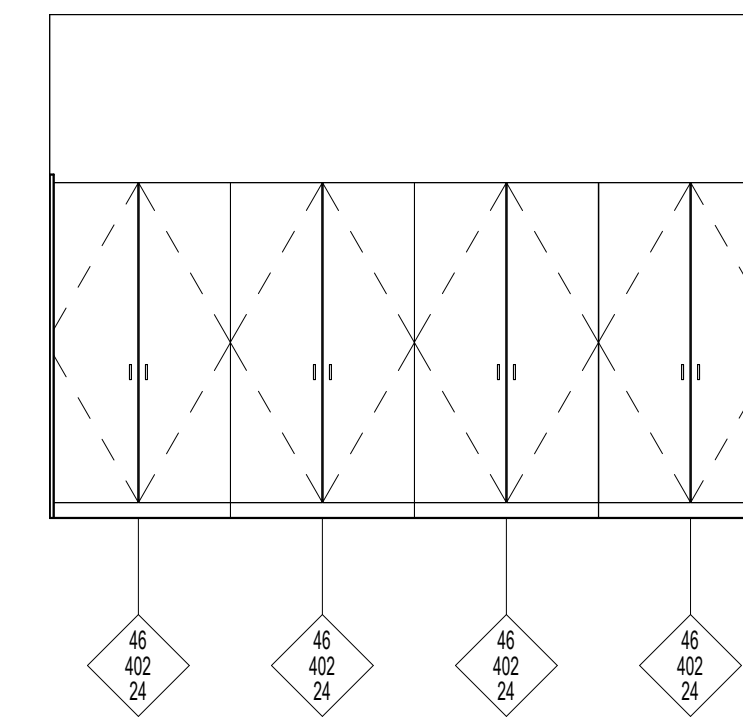
CLASSROOM 4 5D
1/4" = 1'-0"



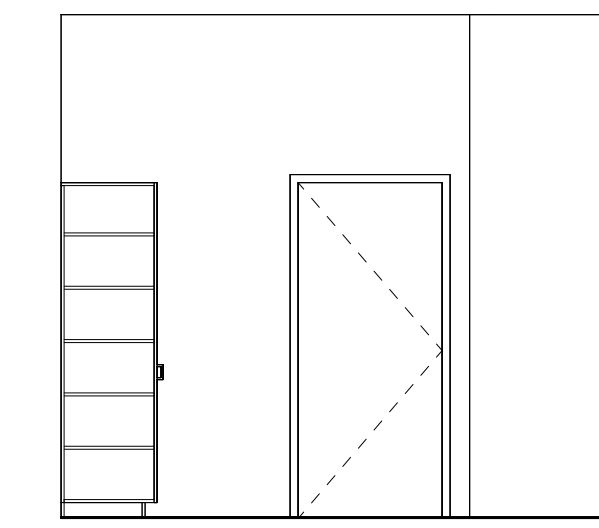
STORAGE 1 2A
1/4" = 1'-0"



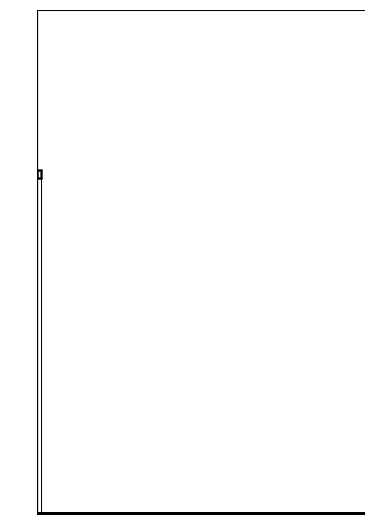
STORAGE 2 2B
1/4" = 1'-0"



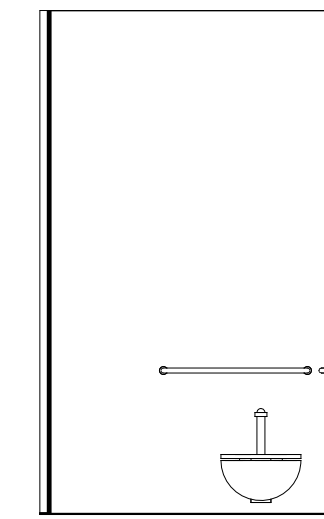
STORAGE 3 2C
1/4" = 1'-0"



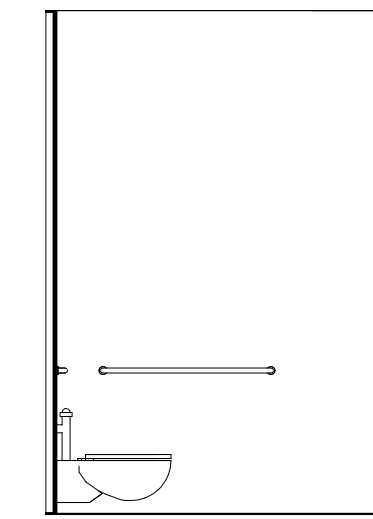
STORAGE 4 2D
1/4" = 1'-0"



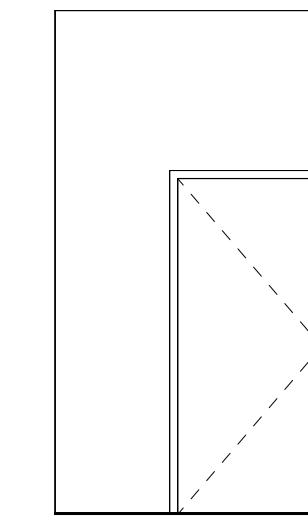
RESTROOM 1 4A
1/4" = 1'-0"



RESTROOM 2 4B
1/4" = 1'-0"



RESTROOM 3 4C
1/4" = 1'-0"



RESTROOM 4 4D
1/4" = 1'-0"

CONSULTANT:

INTERIOR ELEVATIONS

COLTON JOINT UNIFIED SCHOOL DISTRICT
 GRAND TERRACE ELEMENTARY SCHOOL AND TERRACE VIEW ELEMENTARY
 SCHOOL TK MODULAR BUILDINGS
 22731 GRAND TERRACE ROAD
 GRAND TERRACE, CA 92313



SEALS:



PROJECT NUMBER: 22107-00
 PROJECT STATUS: P1-Project Status
 SHEET ISSUED: 07/18/22
 DELTA: DATE DESCRIPTION

J:\22-17105-01_CJUSD_GJES_Classroom Addition and Storage\Design\03 Rev\22-12105-01.dwg
 7/24/2023 5:56:39 PM